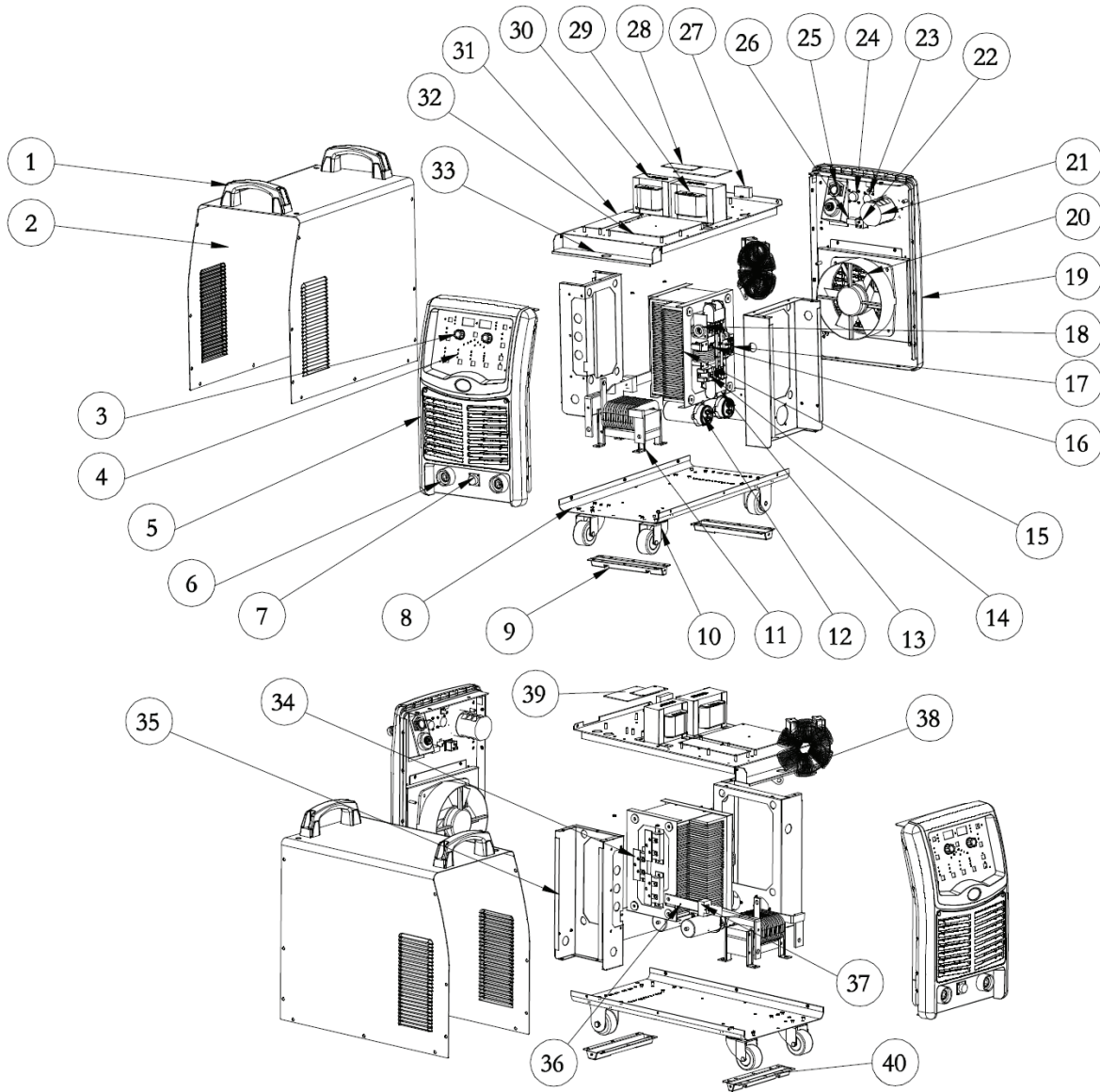


SPARE PARTS IDENTIFICATION



#	Part Number	Description	#	Part Number	Description
1	10027491	Handle	21	10004935	Power switch
2	10069151	Cover	22	10045461	Socket for heater
3	30000103	Knob	23	10060962	12-pin socket
4	10069237	Front sticker and display board	24	10060959	10-pin socket
5	10060540	Front panel	25	10004895	Spring cable clip
6	10004640	Quick socket	26	10045237	OC protector
7	10060940	12-pin socket	27	10044784	Capacitor
8	10061056	Machine base	28	10060957	Power transferring board
9	10051546	Support of main body *optional	29	10061126	Transformer
10	62107/62108	Universal caster / caster *optional	30	10057824	Transformer
11	10061168	Reactor	31	10060935	Auxiliary control board
12	10005752	Film capacitor	32	10057807	Control board
13	10005910	Film capacitor	33	10061063	Clapboard
14	10051315	IGBT	34	27806/57730	Driving board
15	10056315	IGBT heat sink	35	10061059	Bracket of heat sink
16	10006445	Thermoswitch	36	10061061	Al connection
17	10006623	Rectifying bridge	37	10057013	Hall sensor
18	10057574	Sampling board	38	10057513	Main transformer
19	10060542	Rear plastic panel	39	10061728	EMC board
20	10060960	Fan	40	10055842	Support of main body

ROLLER DIAMETER: 30/10

V GROOVE DRIVE ROLLER - STEEL WIRE

Part-No	Description
10054932	MILD STEEL 1.0/1.2MM
10054935	MILD STEEL 1.2/1.6MM

U GROOVE DRIVE ROLLER - SOFT WIRE

Part-No	Description
10054930	U GROOVE FOR ALUMINIUM 1.0/1.2MM
10054931	U GROOVE FOR ALUMINIUM 1.2/1.6MM

KNURLED DRIVE ROLLER - FLUX CORE WIRE

Part-No	Description
10068615	FLUX CORED 0.8/0.9MM
10062293	FLUX CORED 1.0/1.2MM
10062292	FLUX CORED 1.2/1.6MM

